



# District Scale Project Package on the Carlin Trend

## Investment Highlights

### STRATEGIC POSITION ON THE CARLIN TREND

- District hosts Newmont's Rain and Emigrant Mines and Gold Standard's new Pinion and Dark Star discoveries at the Railroad-Pinion district.
- South Carlin Projects (135 km<sup>2</sup>) includes: Pony Creek, Dixie Flats and North Star; Immediately SE and NE of Gold Standard Ventures.

### WELL-FUNDED EXPLORATION STRATEGY

- \$6.2 million in cash to fund aggressive exploration programs.

### DEFINED MINERALIZATION AND TARGETS

- South Carlin Project hosts historical gold resource estimates, and extensive exploration databases.
- Large oxide gold corridors identified at Bowl and North Zones.
- Significant, new large-scale drill targets defined for 2018.
- 16,000 metres of drilling underway.
- Anticipated mineral resource estimate on Pony Creek: Q4-2018 / Q1-2019.

### PORTFOLIO OF OPPORTUNITIES

- Portfolio of 13 projects 275 km<sup>2</sup> with historical resources<sup>(1)</sup>, mineralized drill intercepts and/or gold showings on major gold trends.

## Leadership & Shareholders

### HIGHLY EXPERIENCED TEAM

Contact Gold's team is led by geologists, mining executives, finance and investment banking professionals with significant experience from Discovery to Mine Building.

### DIRECTORS

**JOHN DORWARD** – CHAIRMAN  
**GEORGE SALAMIS** – DIRECTOR  
**MARK WELLINGS** – DIRECTOR  
**CHARLIE DAVIES** – DIRECTOR  
**RIYAZ LALANI** – DIRECTOR

### MANAGEMENT

**MATTHEW LENNOX-KING** – DIRECTOR, PRESIDENT & CEO  
**JOHN WENGER** – CFO & VP STRATEGY  
**VANCE SPALDING** – VP EXPLORATION  
**ANDREW FARNCOMB** – DIRECTOR AND SENIOR VP

### STRATEGIC SHAREHOLDERS

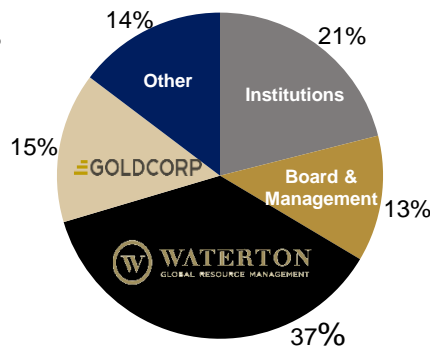
Mix of institutional investors, leading gold companies, and substantial Board ownership.

## Key Financial Statistics

As of May 24, 2018

Contact Gold is well capitalized with a strong treasury to fund its exploration programs. Its shareholders include Waterton Global Resource Management, Goldcorp and several leading mining focused institutional investors.

- Share Price: \$0.32
- Shares outstanding: 50.4 M
- Preferred Shares: 11.1 M<sup>(2)</sup>
- Options/Restricted Shares: 3.3 M
- Market Capitalization: \$18.1 M



**Board and Waterton locked-up until June 2019**

1) Pony Creek Technical Report dated March 15, 2017 (refer to Disclaimer – Information Regarding Historic Resources). 2) Preferred Shares terms are as follows: early redemption provisions at Contact Gold's option, US\$11.1 million face value, 5-year term, cumulative cash dividend at a fixed rate per annum equal to 7.5% payable on the maturity date, convertible into common shares at US\$ equivalent of \$1.35 per share subject to the exchange rate at the time of conversion. Based on CAD/USD FX rate of 0.7810 on November 2, 2017, Waterton's fully diluted interest is 45.46%. Note: This summary is qualified in its entirety by reference to the terms of the preferred shares of the company set out in the articles of incorporation, the investor rights agreement and the securities exchange agreement (including the form of governance and investor rights agreement), which has been filed on SEDAR under the issuer profile of Contact Gold Corp. Company financials can also be found on SEDAR.

# Strategic Land Position – 135 km<sup>2</sup> on the Carlin Trend

## 2017 Drilling Highlights

Hole	From (m)	To (m)	Length (m)	Au g/t
PCC17-24	117	161	44	1.36
Including	125	141	16	3.35
PC17-03	62	128	66	0.65
Including	67	85	18	1.48
PC17-01	67	114	47	0.41
PC17-17	181	229	47	0.61
PC17-010	104	149	46	2.82
Including	111	133	21	5.45
Including	111	117	6	10.53
PC17-007	44	123	79	0.78
PC17-014	5	24	20	0.82
Including	8	12	5	2.10
PC17-09	114	130	15	0.92

## Project Highlights

### STRATEGIC LAND POSITION

–135 km<sup>2</sup> located immediately to the south of Gold Standard's Railroad-Pinion Project

– Properties in prospective districts unlocked, and unexplored over the past 10 years

### ESTABLISHED MINERALIZATION

– Underlain by Carlin-type gold system with historic gold resources<sup>(1)</sup>

- **29.4 M tonnes @ 1.5 g/t Au (1,426,000 ounces contained)**

– Significant gold intercepts:

- **2.88 g/t Au over 99 m, including 15.99 g/t Au over 6m**

**TARGET RICH ENVIRONMENT** – Near surface oxide and deeper high grade targets supported by extensive exploration databases

**PROSPECTIVE HOST ROCKS** – Key regional gold host units present including the Devonian Webb / Devil's Gate and the Dark Star Pennsylvania-Permian clastic carbonate units

**UNTESTED OPPORTUNITIES** – Large areas of prospective rocks have never been explored, particularly where the newly-recognized host horizons at the Railroad-Pinion Project to the north are exposed at Pony Creek

**POSITIONED FOR MAJOR DISCOVERIES** – 2018 program expanding Bowl and North zone & to test new targets

## Catalysts

### 1. ONGOING DRILL RESULTS FROM BOWL AND NORTH ZONES

- 16,000 metres of RC and Core drilling underway

### 2. MULTIPLE NEW TARGETS READY TO DRILL IN 2018 DRILLING PROGRAM

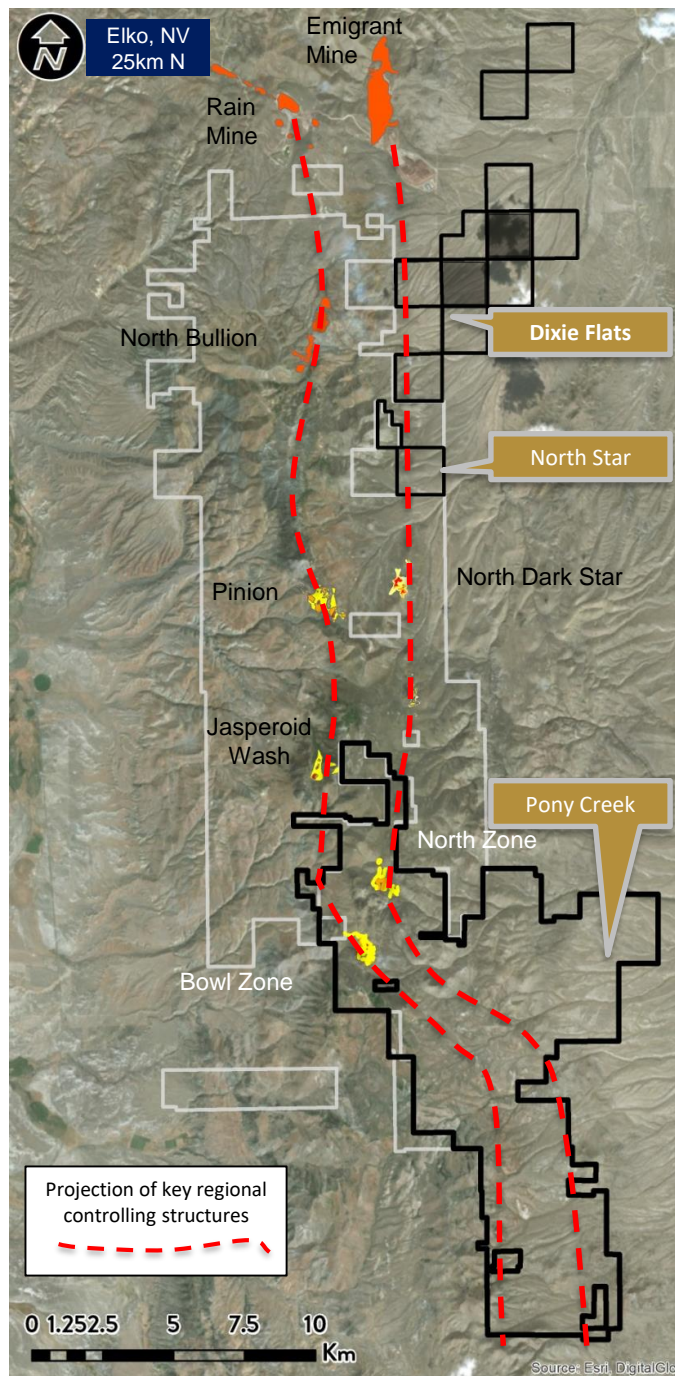
- Result of comprehensive soil sampling, geophysical surveys and structural mapping through 2017

### 3. MINERAL RESOURCE ESTIMATE, PONY CREEK

- Expected Q4-2018/Q1-2019

### 4. FURTHER CONSOLIDATION OF SOUTH CARLIN DISTRICT

### 5. VALUE CREATING TRANSACTIONS AND EXPLORATION ON OTHER 10 PROJECTS IN PORTFOLIO



Note: Property boundary and deposit locations are approximations